

3.4. Vehicles entering and exiting the rotary parking

3.4.1. Vehicles entering the rotary parking



WARNING! Prior to entering a vehicle in a rotary parking, it is necessary to check the maximum permissible mass of the vehicle and the maximum vehicle dimensions.

Before parking a vehicle on a platform, it is necessary to remove the remains of snow and ice from the vehicle and all passengers and animals must exit the vehicle. Passengers and animals should not exit the vehicle on the platform.

If there is a luggage in the vehicle, it must be unloaded before the vehicle enters the rotary parking - it is not allowed to unload the goods from the vehicle on the parking platform.

It is not allowed to enter a parking platform with snow chains on the vehicle due to possible damage to the platform.

If necessary, remove the roof boxes, roof rails and the antenna from the vehicle.

Vehicles on a rotary parking are parked on a free parking platform at level 0. The EPS-RP system has - depending on the model - 6, 8, 10 or 12 parking platforms. If there is no free parking platform at level 0, it is necessary to call it (see chapter 3.3).



Figure 9: Free parking platform at level "0"



Figure 10: Occupied parking platform at level "0"

Vehicles must always enter parking platform with the front side.



Figure 11: Correct entry at the rotary parking with the front side of the vehicle



Figure 12: Incorrect entry at the rotary parking with the back side of the vehicle



Figure 15: Correct positioning of the wheels on the wheel lanes

Mirror on the front of the rotary parking allows the driver additional control of the correct entry of the vehicle on the parking platform and positioning within the wheel lanes.



Figure 16: Mirror on the front of the rotary parking for wheel positioning control

The maximum vehicle speed when entering a rotating parking space is 5 km / h (walking speed). Excessive braking and acceleration must be avoided on the parking platform. When entering the parking platform, the vehicle wheels must be positioned within the wheel lane of the parking platform.



Figure 13: Wheel lanes at the parking platform



Figure 14: Correct positioning of the wheels during vehicle entry

There are two safety barriers on the wheel lanes of the parking platform - the first (small) barrier and the second (large) barrier - which are given for correct wheel positioning and parking on parking platform.

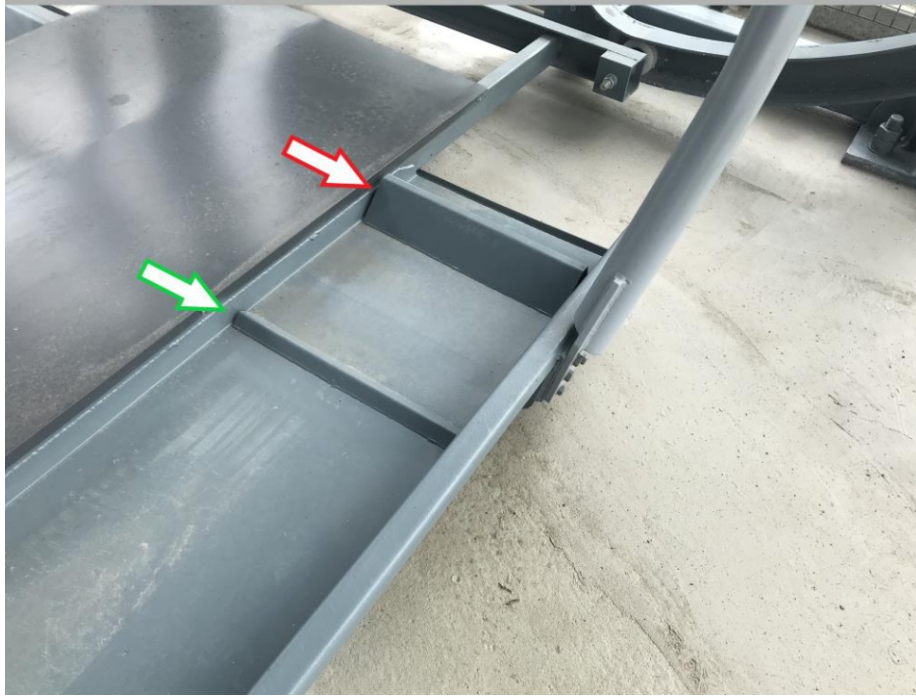


Figure 17: Safety barriers on the wheel lanes

The vehicle is being parked until the front wheels pass the first safety barriers. The vehicle must be stopped when the front wheels are located between the first and the second safety barriers on the wheel lanes.



Figure 18: Correct positioning of the wheels between two barriers



WARNING! The vehicle must not cross over the second safety barrier on the lane. Moving the vehicle over second barrier can result in driver injuries and serious vehicle and rotary parking damage.

A mirror in the interior of the rotary parking allows the driver to further control the position of the vehicle on the parking platform.

After the driver has stopped the vehicle on the parking platform, the vehicle must be put in the first gear (P position in case of automatic transmissions) and hand brake applied. When the vehicle is parked, the driver must leave the vehicle, lock it out and leave the parking space.

3.4.2. Vehicles exiting the rotary parking

If the parked vehicle is not on the platform at level 0 of rotary parking, it is necessary to call the appropriate parking platform (see chapter 3.3).

Vehicles from the rotary parking exit the parking platform at level 0, slow driving backwards (up to 5 km/h). Before moving backwards, it is necessary to check whether there are any persons, objects or other vehicles waiting for the entrance.

While exiting the rotary parking, it is not allowed to stay on the access ramp.

