

www.esc.guide/barcontainer

BAR CONTAINER

We sell bar containers to help you start your own business and keep it organized!



Bar Container is a company specialized in finding solutions to storage problems. We have been active in the European market for over 10 years to provide any client with the right container for his or her situation. We have grown into a well-known name and currently are active in more than 15 countries throughout Europe and our aim is to expand this to the entire European continent. The Bar containers are popular with both private clients and business in various industries throughout Europe.

More Information:

Web Link Presentation: <https://www.esc.guide/barcontainer>
Official Web Site: <https://www.barcontainer.com>



Our Bar Container is versatile, modern and easy to assemble! We have many options to fit your style and space. You can use the bar container as a safe way to storage your tools, as your own private workshop for all of your DIY projects, or anything else you might need.

The foldable canopy on one side makes it easier to access the inside and brings in the light so you can work comfortably and/or serve your guests and clients. This particular kind of container may hold the key to creating a favourable environment for pleasant experiences and memories.



INDEX

A. MODELS & PRICES

1. BAR CONTAINER - 3X2 AND 3X2 XL METERS
2. BAR CONTAINER 4X2 AND 4X2 XL METERS
3. BAR CONTAINER LINKED BAR CONTAINERS

B. ACCESSORIES

1. RAMP / LAMP / ANTI-THEFT SECURITY BAR LOCK
2. SHELVING SYSTEM
3. RAL COLORS
4. COLORFUL AND CUSTOMIZABLE CONTAINERS

C. TIPS

1. OUR COMMITMENT TO THE CUSTOMER
2. MOBILE POP UP SHOP
3. ADVANTAGES OF USING OUR BAR CONTAINERS FOR YOUR MOBILE POP UP SHOP
4. CONTAINERS FOR FESTIVALS
5. VERSATILE SOLUTION FOR YOUR RESTAURANT
6. RESTAURANT IN A CONTAINER
7. BARCONTAINER BISTROBAR
8. GARDEN BARCONTAINER

D. ASSEMBLY INSTRUCTIONS

E. CASE STUDIES / IDEAS

1. **10ft Container Bar at the Grand Prix Zandvoort**
<https://www.esc.guide/post/10-foot-container-bar-at-the-grand-prix-zandvoort>
2. **20ft Containers with 3 canopies 6x2 XL in Green RAL 6009**
<https://www.esc.guide/post/20ft-containers-with-3-canopies-6x2-xl-in-green-ral-6009>
3. **Container Bakery Shop Robienos 4x2XL RAL 9005**
<https://www.esc.guide/post/container-bakery-shop-robienos-4x2xl-ral-9005>
4. **Container XL 4x2 Bruges Market Bar**
<https://www.esc.guide/post/container-xl-4x2-bruges-market-bar>
5. **Farmers Market Red Container Pop Up RAL 3018**
<https://www.esc.guide/post/farmers-market-red-container-pop-up-ral-3018>
6. **Garden Bar Container 3x2m XL with a Foldable Canopy**
<https://www.esc.guide/post/garden-bar-container-3x2m-xl-with-a-foldable-canopy>
7. **Ice Cream Shop Container 3x2 meters RAL 9005**
<https://www.esc.guide/post/ice-cream-shop-container-3x2-meters-ral-9005>
8. **Large Bar Container in Green RAL 6005 6x2 meters**
<https://www.esc.guide/post/large-bar-container-in-green-ral-6005-6x2-meters>
9. **Outdoors Bar in a Container, a great addition to your backyard!**
<https://www.esc.guide/post/outdoors-bar-in-a-container-a-great-addition-to-your-backyard>
10. **Restaurant in a Container 4x2 meters Anthracite Color RAL 7016**
<https://www.esc.guide/post/restaurant-in-a-container-4x2-meters-anthracite-color-ral-7016>

www.esc.guide/barcontainer

11. **Retro Style Backyard Container Bar with Colorful Interior**
<https://www.esc.guide/post/retro-style-backyard-container-bar-with-colorful-interior>
12. **Shipping Container Bar Padel Sports Center 4x2 XL**
<https://www.esc.guide/post/shipping-container-bar-padel-sports-center-4x2-xl>
13. **Stunning Pop-Up Container Design at a Seaside Beach Club!**
<https://www.esc.guide/post/stunning-pop-up-container-design-at-a-seaside-beach-club>
14. **The Metal Container in Black 4x2 meters XL**
<https://www.esc.guide/post/the-metal-container-in-black-4x2-meters-xl>
15. **Beachside Modified Shipping Containers in Black RAL 9005**
<https://www.esc.guide/post/beachside-modified-shipping-containers-in-black-ral-9005>
16. **Demountable Container DOK Bistro Bar and Hotel**
<https://www.esc.guide/post/demountable-container-dok-bistro-bar-and-hotel>
17. **Surfing Shop Flat Pack Container 4x2m in Color Blue**
<https://www.esc.guide/post/surfing-shop-flat-pack-container-4x2m-in-color-blue>
18. **Football Club Bar Container 4x2m RAL 8000 - FC Lisse**
<https://www.esc.guide/post/football-club-bar-container-4x2m-ral-8000-fc-lisse>
19. **Coffee Bar & Bakery Container 8x2 m RAL 3015**
<https://www.esc.guide/post/coffee-bar-bakery-container-8x2-m-ral-3015>
20. **White Folding Canopy Container Pool Stand 3x2 meters RAL 9016**
<https://www.esc.guide/post/white-folding-canopy-container-pool-stand-3x2-meters-ral-9016>

A.1. BAR CONTAINER - 3X2 AND 3X2 XL METERS

BAR CONTAINER 3x2 METERS BLACK RAL 9005



- Demountable.
- Demountable bar tray for self-assembly.
- External dimensions (LxWxH): 2950 x 2142x 2088 mm.
- Internal dimensions: (LxWxH): 2872 x 2062 x 1950 mm.
- Door dimensions: (LxH): 1750 x 1850 mm.
- Available in all RAL colors.
- The lid of the container is secured on both sides with two-cylinder locks.
- Fully self-supporting construction, including the floor.

€ 2.399,00

BAR CONTAINER 3x2 XL METERS BLACK RAL 9005



- Demountable.
- Demountable bar tray for self-assembly.
- Exterior dimensions (LxWxH): 2952 x 2290 x 2240 mm.
- Interior dimensions (LxWxH): 2795 x 2130 x 2100 mm.
- Door dimensions (LxH): 1750 x 2050 mm.
- Available in all RAL colors.
- The roof of the container is secured by two-cylinder locks on both sides.
- Completely self-supporting construction, including the floor.

€ 2.599,00



“Choose between the wide variety of all the RAL classic colors for your Bar Container”

A.2. BAR CONTAINER 4X2 AND 4X2 XL METERS

BAR CONTAINER 4x2 METERS BLACK RAL 9005



- Demountable.
- Demountable bar tray for self-assembly.
- External dimensions (LxWxH): 3880 x 2142 x 2088 mm.
- Internal dimensions (LxWxH): 3802 x 2062 x 1950 mm.
- Door dimensions: (LxH) : 1750 x 1850 mm.
- Available in all RAL-colors.
- The lid of the container is secured with two cylinder locks on both sides.
- Fully self-supporting construction, including the floor.

€ 2.599,00

BAR CONTAINER 4x2 XL METERS BLACK RAL 9005



- Demountable. Demountable bar tray for self-assembly.
- External dimensions (LxWxH): 3882 x 2290 x 2240 mm.
- Internal dimensions (LxWxH): 3802 x 2210 x 2100 mm.
- Door dimensions: (LxH): 1750 x 2050 mm.
- Available in all RAL colors.
- The lid of the container is secured on both sides with two cylinder locks.
- Fully self-supporting construction, including the floor.

€ 2.799,00



“Its unique design allows the containers to be easily transported with a small lift or even by hand”

A.3. BAR CONTAINER LINKED BAR CONTAINERS

- Demountable bar tray for self-assembly.
- Fully self-supporting construction, including the floor.
- Available in all RAL colors.

BAR CONTAINER 4×3 METERS BLACK RAL 9005



- External dimensions (LxWxH): 4285 x 2951,2 x 2088,5 mm.
- Internal dimensions (LxWxH): 4122,4 x 2875 x 2039 mm.
- Canopy dimensions: (LxH): 2120 x 2003 x 920 mm.
- Door dimensions: (LxH) : 1750 x 1850 mm.
- The lid of the container is secured with two-cylinder locks on both sides.

€ 5.073,00

BAR CONTAINER 4×4 METERS BLACK RAL 9005



- External dimensions (LxWxH): 4285 x 3885 x 2088 mm.
- Internal dimensions: (LxWxH): 4136 x 3727 x 2080 mm.
- Canopy dimensions: (LxH): 2120 x 2003 x 920 mm.
- Door dimensions: (LxH): 1750 x 1850 mm.
- The lid of the container is secured on both sides with two-cylinder locks.

€ 5.473,00

BAR CONTAINER 6x2 METERS BLACK RAL 9005



- External dimensions (LxWxH): 5907 x 2142 x 2088 mm.
- Internal dimensions: (LxWxH): 5752 x 2062 x 1950 mm.
- Door dimensions: (LxH): 1750 x 1850 mm.
- The lid of the container is secured on both sides with two-cylinder locks.
- Our unique modular design comes standard with 2 panels of 3 meters for stacking bins and 2 panels for double doors.
- The image shown includes an additional 2-meter custom panel.

€ 4.653,00 – €5.443,00*

**Price varies by the number of canopies*

BAR CONTAINER 8x2 METERS BLACK RAL 9005



- External dimensions (LxWxH): 7767 x 2142 x 2088 mm.
- Internal dimensions (LxWxH): 7612 x 1992 x 1900 mm.
- Door dimensions: (LxH): 1750 x 1850 mm.
- The lid of the container is secured on both sides with two-cylinder locks.
- Our unique modular design comes standard with 2 panels for containers with 4 m posts and 2 panels with double doors.
- Pictured includes an additional 2m custom panel.

€ 5.053,00 – € 5.843,00*

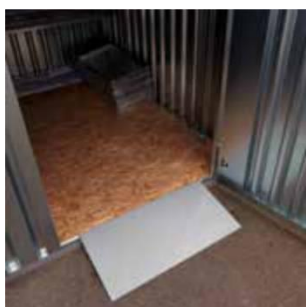
**Price varies by the number of canopies*

B. ACCESSORIES

A collapsible bar container can be completed with a number of different accessories. Would you like to present your goods or stock neatly in the bar container? Then the shelf packs are suitable for your demountable bar container. Or if the bar container needs to be accessible by a cart, for example, the ramp is perfect for your bar container. Finally, it is possible to improve the security of your container. With the burglar bar, the container door is additionally secured, so you can be sure that your belongings are stored safely.

B.1. RAMP / LAMP / ANTI-THEFT SECURITY BAR LOCK

RAMP FOR BAR CONTAINERS - Make the use of hand trucks and carts easier with the ramp.



The ramp for the bar containers is made of black steel and is colored gray hereafter, which gives the ramp an extra strength. The ramp has a length of 100 cm and a width of 50 cm. Because of this size it fits in any demountable bar containers with a double door.

- Dimension length 100 mm
- Dimension width 50 mm

€ 229,00

LAMP FOR BAR CONTAINERS - Lighting for our containers



The ergonomic handle on the light bulb for our containers makes it simple to move it into position or swap it out. It is simple to attach using the three magnets it possesses to any of the metal panels of the container, whether they are on the roof panel or the side. Also features a hook to hang the light bulb if you prefer not to use the magnets and instead wish to hang it from a lifting eye.

- Cable length: 5 m
- Easy to attach using a magnet
- 2 sockets with 230 volts
- Energy saving lamp with 11 watts

€ 249,00

ANTI-THEFT SECURITY BAR LOCK - We take care of the security of your containers!



The anti-theft security bar lock is the perfect extra to provide the container you've chosen more security. Having both a single door and a double door on the short side can employ the anti-theft bar. This security bar must be fastened by fastening the side pieces to the bar containers.

- Extra protection against theft
- Easy to mount

€ 169,00

"Our accessories give your container an extra upgrade, both visually and functionally!"

B.2. SHELVING SYSTEM

3x1 METER WIDE SHELVES



- Dimensions of plate (LxWxH): 1000 x 500 x 35 mm
- Dimensions with brackets (LxWxH): 1000 x 510 x 100 mm

€ 199,00

3x2 METER WIDE SHELVES



- Dimensions of plate (LxWxH): 1900 x 500 x 35 mm
- Dimensions with brackets (LxWxH): 1900 x 510 x 100 mm

€ 249,00

3x3 METER WIDE SHELVES



- Dimensions of plate (LxWxH): 2800 x 500 x 35 mm
- Dimensions with supports (LxWxH): 2800 x 510 x 100 mm

€ 329,00

Utilize our container shelves to arrange your items

This set of shelves consists of three plates and the mounting components required to attach to the rails found in each container. The galvanized steel tone of the shelves also allows them to complement the inside color of a demountable container. All Containers shelves were designed specifically for them, and they can be used in any container that can be demounted. Additionally, the demountable Bar Container can be flat-packed and arrive with the components needed for their installation, just as the container shelves.

“All the accessories available on the website are specially designed for the containers we sell. The accessories give your container even more functionality and appearance.”

B.3. RAL COLORS

Our bar containers can be ordered in any of the Classic RAL Colors, or can be customized with two colors, ideal to match your company colors, the venue or even your home decor. This customization can be done to any of our demountable containers, whether a 3x2 or a 6x2 container.

Yellow and Orange Tones



RAL 1003
Signal yellow



RAL 1013
Oyster white



RAL 1015
Light ivory



RAL 1023
Traffic yellow



RAL 2004
Pure orange

Red Tones



RAL 3012
Beige red



RAL 3015
Light pink



RAL 3020
Traffic red



RAL 3022
Salmon pink

Purple Tones



RAL 4005
Blue lilac



RAL 4007
Purple violet



RAL 4010
Telemagenta

Blue Tones



RAL 5010
Gentian blue



RAL 5011
Steel blue



RAL 5013
Cobalt blue



RAL 5015
Sky blue



RAL 5017
Traffic blue



RAL 5020
Ocean blue



Green Tones



RAL 6000
Patina green



RAL 6003
Olive green



RAL 6004
Blue green



RAL 6005
Moss green



RAL 6017
May green



RAL 6018
Yellow green



RAL 6021
Pale green



RAL 6022
Olive drab



RAL 6027
Light green



Grey Tones



RAL 7000
Squirrel grey



RAL 7001
Silver grey



RAL 7002
Olive grey



RAL 7011
Iron grey



RAL 7015
Slate grey



RAL 7016
Anthracite grey



RAL 7021
Black grey



RAL 7022
Umbra grey



RAL 7034
Yellow grey



RAL 7035
Light grey



RAL 7040
Window grey

Brown Tones



RAL 8003
Clay brown



RAL 8017
Chocolate brown



RAL 8022
Black brown

Black & White Tones



RAL 9002
Grey white



RAL 9004
Signal black



RAL 9005
Jet black



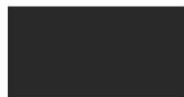
RAL 9006
White aluminium



RAL 9010
Pure white



RAL 9011
Graphite black



RAL 9017
Traffic black



We provide a great offer of various RAL Colors. When your desired color is not shown in the list, please ask our sales team what color you would prefer and they will find out whether your desired color is possible.

B.4. COLORFUL AND CUSTOMIZABLE CONTAINERS



The containers can be painted in any RAL classic color. With this, your demountable containers can be customized with the colors of your business brand, the theme of any event, or just match the environment you want to place your new bar containers.

For example, you can paint your containers for events in RAL 3026 (luminous light red) to stand out in the crowd, or in a RAL 5025 (pastel blue) for a more cute look like a candy store or ice cream shop.



All of our bar containers for events can be ordered in any of the Classic RAL Colors, or can be customized with two colors, ideal to match your company colors, the venue or even your home decor. This customization can be done to any of our demountable bar containers, whether they are 3×2 or 8×2 meters.

RAL 1

RAL 1000	RAL 1001	RAL 1002	RAL 1003	RAL 1004	RAL 1005
RAL 1006	RAL 1007	RAL 1011	RAL 1012	RAL 1013	RAL 1014
RAL 1015	RAL 1016	RAL 1017	RAL 1018	RAL 1019	RAL 1020
RAL 1021	RAL 1023	RAL 1024	RAL 1027	RAL 1028	RAL 1032
RAL 1033	RAL 1034				

RAL 2

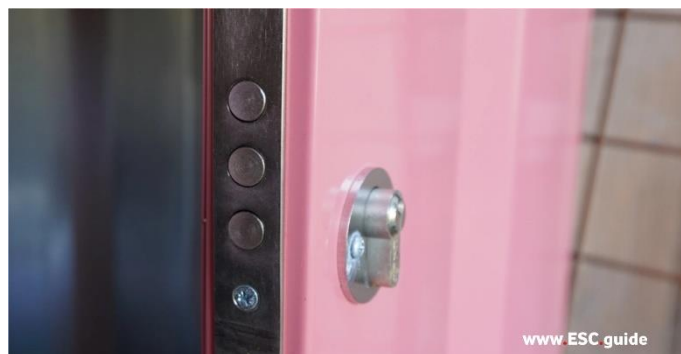
RAL 2000	RAL 2001	RAL 2002	RAL 2003	RAL 2004	RAL 2008
RAL 2009	RAL 2010	RAL 2011	RAL 2012		

RAL 3

RAL 3000	RAL 3001	RAL 3002	RAL 3003	RAL 3004	RAL 3005
RAL 3007	RAL 3009	RAL 3011	RAL 3012	RAL 3013	RAL 3014
RAL 3015	RAL 3016	RAL 3017	RAL 3018	RAL 3020	RAL 3022
RAL 3027	RAL 3031				

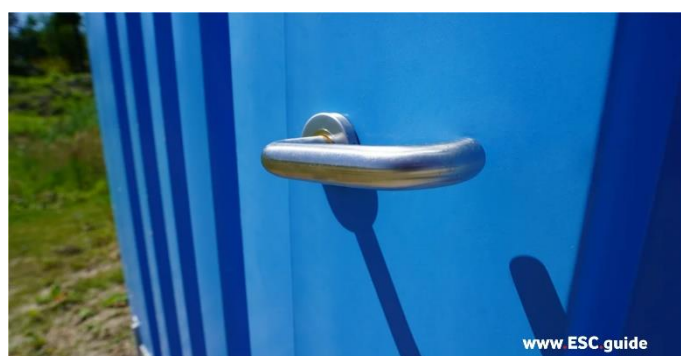
www.esc.guide/barcontainer

RAL 4



RAL 5

RAL 5000	RAL 5001	RAL 5002	RAL 5003	RAL 5004	RAL 5005
RAL 5007	RAL 5008	RAL 5009	RAL 5010	RAL 5011	RAL 5012
RAL 5013	RAL 5014	RAL 5015	RAL 5017	RAL 5018	RAL 5019
RAL 5020	RAL 5021	RAL 5022	RAL 5023	RAL 5024	



RAL 6

RAL 6000	RAL 6001	RAL 6002	RAL 6003	RAL 6004	RAL 6005
RAL 6006	RAL 6007	RAL 6008	RAL 6009	RAL 6010	RAL 6011
RAL 6012	RAL 6013	RAL 6014	RAL 6015	RAL 6016	RAL 6017
RAL 6018	RAL 6019	RAL 6020	RAL 6021	RAL 6022	RAL 6024
RAL 6025	RAL 6026	RAL 6027	RAL 6028	RAL 6029	RAL 6032
RAL 6033	RAL 6034				



RAL 7

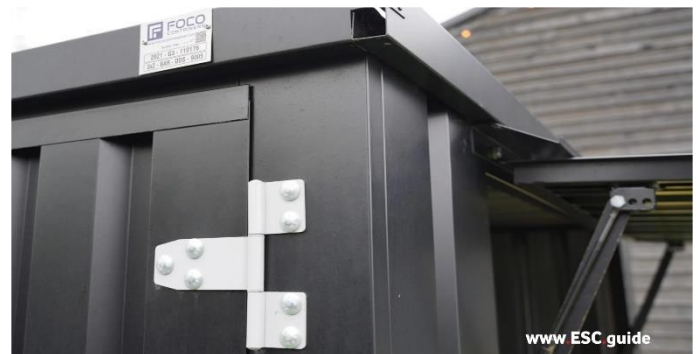
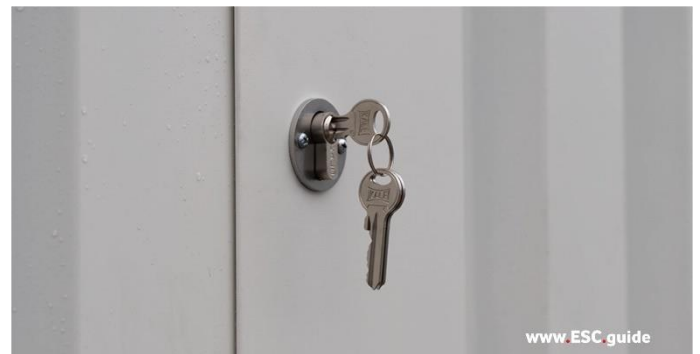
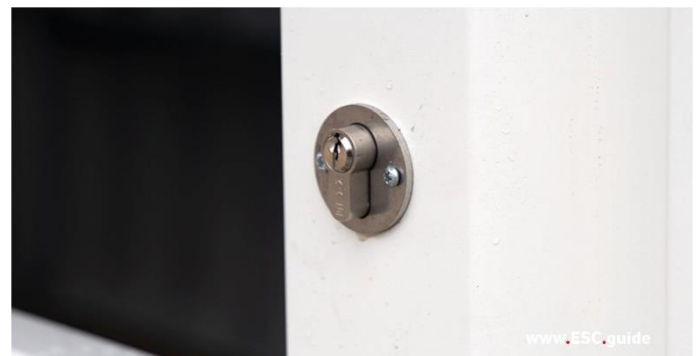
RAL 7000	RAL 7001	RAL 7002	RAL 7003	RAL 7004	RAL 7005
RAL 7006	RAL 7008	RAL 7009	RAL 7010	RAL 7011	RAL 7012
RAL 7013	RAL 7015	RAL 7016	RAL 7021	RAL 7022	RAL 7023
RAL 7024	RAL 7026	RAL 7030	RAL 7031	RAL 7032	RAL 7033
RAL 7034	RAL 7035	RAL 7036	RAL 7037	RAL 7038	RAL 7039
RAL 7040	RAL 7042	RAL 7043	RAL 7044	RAL 7045	RAL 7046
RAL 7047					

RAL 8

RAL 8000	RAL 8001	RAL 8002	RAL 8003	RAL 8004	RAL 8007
RAL 8008	RAL 8011	RAL 8012	RAL 8014	RAL 8015	RAL 8016
RAL 8017	RAL 8019	RAL 8022	RAL 8023	RAL 8024	RAL 8025
RAL 8028					

RAL 9

RAL 9001	RAL 9002	RAL 9003	RAL 9004	RAL 9005	RAL 9006
RAL 9007	RAL 9010	RAL 9011	RAL 9016	RAL 9017	RAL 9018



C.1. OUR COMMITMENT TO THE CUSTOMER

Here at barcontainer.com, we focus on two main goals to provide the best service possible to our customers. These two main goals are the next ones:



SATISFY OUR CUSTOMER'S NEEDS

The customer is our priority, being always available to provide the best service and advice so you can choose your ideal bar containers for events and have the certainty that our product will fulfill your expectations. Our experts will help you with everything you need with a good attitude.



PROVIDE THE BEST QUALITY

There is no better way to celebrate than with durable containers for events. Easy to assemble and resistant to any inconvenience. Our containers are made with the best galvanized steel, which gives you comfort without compromising the structure of the bar containers.



C.2. MOBILE POP UP SHOP

THE FASTEST WAY TO START A NEW VENTURE

A mobile pop up shop designed with our bar containers will allow you, for a low investment, to strategically place your business in the city. Your business will be safe and well equipped with our demountable containers. With your mobile pop up shop, you will be able to be present in a variety of events, get noticed in the crowd and make your product known to large audiences, all in order to create exclusivity among your consumers.

“A MOBILE POP UP SHOP CAN BOOST YOUR BUSINESS TO THE NEXT LEVEL! BE PRESENT IN A LOT OF DIFFERENT EVENTS AND BE THE CENTER OF ATTENTION.”

BENEFITS OF STARTING A MOBILE POP UP SHOP WITH BAR CONTAINERS

There are a variety of benefits starting a mobile pop up shop using demountable bar containers, but what stands out the most is the exclusivity that this innovative proposal can provide.



STAND OUT FROM THE REST

The mobile pop up shop helps you to captivate new consumers because of its strategic positioning, whether it be near your home, near a big building or in any part of the city.

INCREASE YOUR ENGAGEMENT

The pop up shops will allow your brand to be more recognized and also try new marketing strategies such as testing new products or increase your engagement and learn what customers enjoy most about your brand.



UNIQUE AND VERSATILE

Combining the versatility of branding the mobile pop up shop provides with its unique characteristics, custom color, and modern look design, it makes it a unique way of making business all around your city.

C.3. ADVANTAGES OF USING OUR BAR CONTAINERS FOR YOUR MOBILE POP UP SHOP

The bar container is an ideal product to create businesses in. It has a foldable canopy made of galvanized steel including a lock to keep safe everything inside the mobile pop up shop. Because of this, you can leave your business with ease at night knowing that your goods will be safe. Also, because of the foldable canopy the bar container looks like a bar or an open-air store, so it is recognizable from far away.

The mobile pop up shop is ideal for hundreds of small businesses that want to locate themselves quickly and in strategic places, you can do this by telling us where you want your container to be located and asking for permission to your municipality.



SATISFY OUR CUSTOMER'S NEEDS

The customer is our priority, we're always available to provide the best service and advice so you can choose your ideal bar containers for your mobile pop up shop and have the certainty that it will fulfill your expectations. Our experts will help you with everything you need with a good attitude and expertise.



PROVIDE THE BEST QUALITY

There is no better way to celebrate than with bar containers. Easy to assemble and resistant to any inconvenience, our containers are made with galvanized steel, making it efficient to transport without compromising the structure of the bar containers for your pop up shops.

C.4. CONTAINERS FOR FESTIVALS

Don't know how to start a business? Can't find a place at a good price? Want to put your business somewhere for a while? We present the containers for festivals to you. Barcontainer.com creates unique demountable containers that have OSB wooden floors, sturdy galvanized steel panels, and double locks in the door panels. These parts of the bar containers are created separately because these are demountable containers. What makes the bar containers for festivals or other activities attractive is the foldable canopy they have on one of its long sides. The bar containers for festivals are used to create an atmosphere of joy and fun among the people around them, ideal to use during different events.

"THE CONTAINERS FOR FESTIVALS ARE VERSATILE, STURDY AND CAN BE CUSTOMIZED AS YOU WISH. GET YOUR OWN DEMOUNTABLE CONTAINERS!"

The containers for festivals can be used for personal purposes also, like a meeting place with friends at home. These containers for events have a variety of applications like being used as a small commercial store, a flower stand in a shopping mall, or also a food chain restaurant to be in different events.



The canopy on the side of the bar containers for festivals connects the inside and outside of the container. This allows the demountable containers to be used as a bar, store, or a gathering place while someone is serving you. Not only that but also the container can be used for as a container pop up such as a bakery, ice cream shop, coffee shop, sporting goods store, or as a restaurant. The containers for festivals can be used for anything – just use your imagination.

"THE CONTAINERS FOR FESTIVALS CAN BE USED FOR PERSONAL OR CORPORATE PURPOSES. THEY ADAPT PERFECTLY TO EVERY SITUATION!"



C.6. RESTAURANT IN A CONTAINER

VERSATILE SOLUTION FOR YOUR RESTAURANT

A restaurant in a container is a trend that has gained popularity in the past decade. Installing a bar container is a profitable option for those who want to open their business in a modern and versatile way. The demountable bar container is easy to install and move, making them an excellent choice for setting up a restaurant anywhere you like. The demountable containers that can be used as a restaurant adding to their easy transportation when assembled are very sturdy and resistant to different seasons.

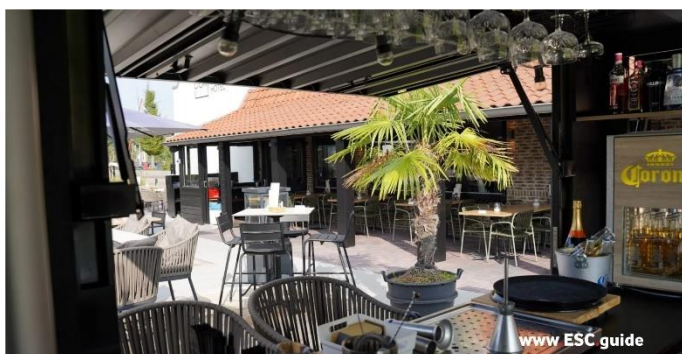
"EVERYONE WILL MARVEL AT YOUR RESTAURANT IN A CONTAINER, A MODERN SOLUTION FOR THE FOOD INDUSTRY!"



WHY START YOUR RESTAURANT IN A CONTAINER?

One of the main advantages of a restaurant in a container is the foldable canopy on the side of the container. This will make your demountable container look great and innovative, attracting all kinds of customers. In addition, one of the main advantages of using our bar container to build a restaurant is that it will be durable, as it is made of high-quality galvanized steel. Thus, your bar container will last for a long time and will not need any maintenance. This is in contrast to many other materials or buildings that require a lot of maintenance.

In addition, a restaurant in a container is very versatile for transportation while dismantled. The containers have forklift pockets on the bottom of the unit. This makes it easy to move your newly acquired bar container to another location.



C.7. BARCONTAINER BISTROBAR



This bar container project is a good example of the possibilities available to a hospitality company. This business called Bistrobare Bankoh has fully equipped our bar container to serve customers on the terrace. The guests can ask for a drink at a bar with a nice industrial look.

This bar container is colored in RAL 7021 a color that fits well with the look and feel of the company. This bar container is placed on an open terrace and can be closed at the end of the day for the general public.

C.8. GARDEN BARCONTAINER



This is a great example of what can be accomplished with our bar container. This bar container has been placed with a private individual in the garden. The container is fully equipped to serve tasty drinks to friends and family with a jungle theme.

This bar container has been placed in the garden and this handy customer has made a beautiful conversion. Totally in the style of the garden, this is well seen in the fence.

D. ASSEMBLY INSTRUCTIONS

Tools needed:



- Screwdriver or drill (Phillips head)
- 13 mm wrench
- 19 mm wrench
- Torque wrench (13 mm and 19 mm attachments)

Assembly Manual:



First, use the 19 mm and 13 mm wrenches to remove the screws that hold the floor and roof packages together. the roof package together, and save these screws. Also unscrew and save the Lifting lugs on the roof and save them.

Then remove the wood blocks at the corners of the package and the iron blocks in the center, these are not required for assembly, but may be useful when leveling the container.



Then remove the panels from the packaging, do not place them on the asphalt, as this may cause damage in the form of dents or scratches. Protect the plates with wood or plastic scraps in front of the package. Always mount a container on a flat surface.

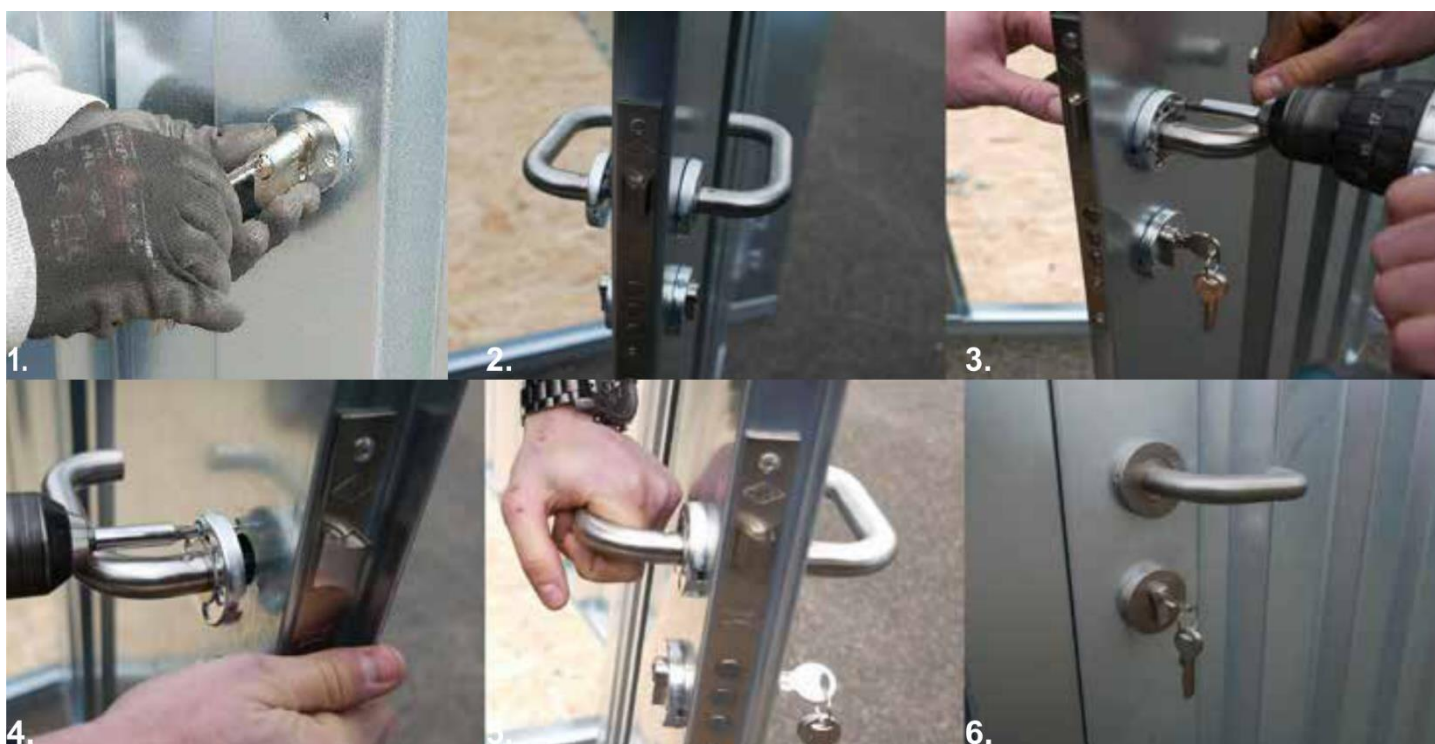


The plates are then placed in the correct position (see illustration above). These are mounted with the 13 mm and 19 mm screws from the package with an appropriate washer between them (photo below). During assembly, the plates must be held by an additional person so that they do not be held so that they cannot fall to the floor. fall to the floor. fall to the floor. Once the panels are secured to the ground, they can be released, provided there is no wind. The side panels (walls) are installed first, followed by the door.





Then the two plates are fixed with a 13 mm bolt, a nut and two washers. The screw is fixed with the nut in the holes with a washer on both sides for protection. At each corner of the container are three mounting holes, in which a screw should be inserted.



With the key, the cylinder lock is attached (photo 1). Next, attach the door handle (photo 2), which must be screwed on both sides with 3 screws (photo 3 + 4). Then the lock is attached to the side of the door with the long screw (photo 5). Finally, the metal protectors are attached to each latch and keyhole (photo 6).



The roof should be set up with (at least) four people. First, all stand next to the container and then simultaneously lift the roof over your head. Place the roof up to about halfway on top of the container. Half the people then go into the container, lift the roof through and lay it properly. The roof lies correctly when it has fallen completely into the slots.



Next, mount the roof with a 13 mm bolt, a nut and two washers, as shown in the picture above.



Now screw the rain gutter to the top of the awning plate with three screws, it is best to have someone outside holds the screws and someone else tightens them inside.



Now attach the handles to the cap with the remaining screws. There are three holes. Make sure make sure that the handles are attached on the outside at the top and on the inside at the bottom, as shown in the figure below. The handles should be attached from the outside and inside.



Finally, the crane lugs are reattached to the container roof, for which no tools are required. tools are required.

E. CASE STUDIES / IDEAS



10ft Container Bar at the Grand Prix Zandvoort



20ft Containers with 3 canopies 6x2 XL in Green RAL 6009



Container Bakery Shop Robienos 4x2XL RAL 9005



Container XL 4x2 Bruges Market Bar



Farmers Market Red Container Pop Up RAL 3018



Garden Bar Container 3x2m XL with a Foldable Canopy



Ice Cream Shop Container 3x2 meters RAL 9005



Large Bar Container in Green RAL 6005 6x2 meters



Outdoors Bar in a Container



Restaurant in a Container 4x2 meters Anthracite



Retro Style Backyard Container Bar with Colorful Interior



Shipping Container Bar Padel Sports Center 4x2 XL



Stunning Pop-Up Container Design at a Seaside Beach Club!



The Metal Container in Black 4x2 meters XL



Beachside Modified Shipping Containers



Demountable Container DOK Bistro Bar and Hotel



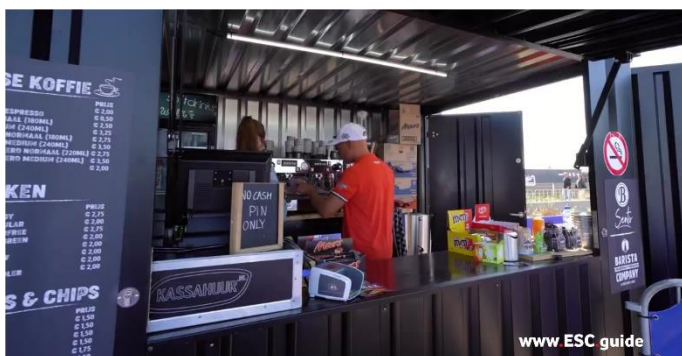
Surfing Shop Flat Pack Container 4x2m in Color Blue



Football Club Bar Container 4x2m RAL 8000 - FC Lisse

10ft Container Bar at the Grand Prix Zandvoort

More VIDEOS / PHOTOS: <https://www.esc.guide/post/10-foot-container-bar-at-the-grand-prix-zandvoort>



www.esc.guide/barcontainer

20ft Containers with 3 canopies 6x2 XL in Green RAL 6009

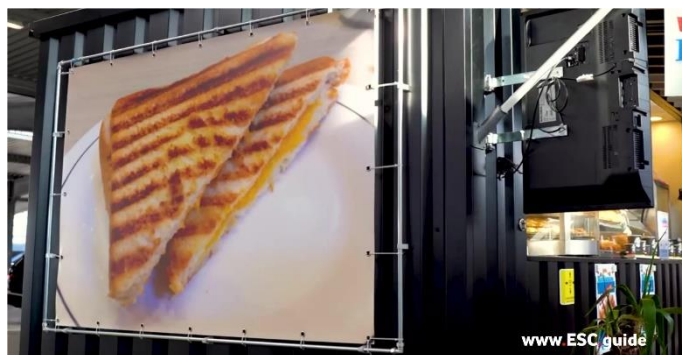
More VIDEOS / PHOTOS: <https://www.esc.guide/post/20ft-containers-with-3-canopies-6x2-xl-in-green-ral-6009>



www.esc.guide/barcontainer

Container Bakery Shop Robienos 4x2XL RAL 9005

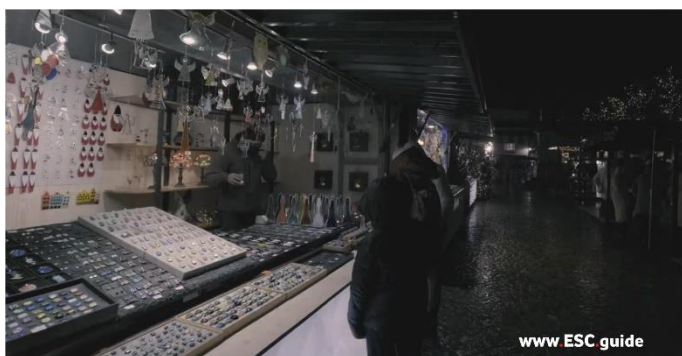
More VIDEOS / PHOTOS: <https://www.esc.guide/post/container-bakery-shop-robienos-4x2xl-ral-9005>



www.esc.guide/barcontainer

Container XL 4x2 Bruges Market Bar

More VIDEOS / PHOTOS: <https://www.esc.guide/post/container-xl-4x2-bruges-market-bar>



www.esc.guide/barcontainer

Farmers Market Red Container Pop Up RAL 3018

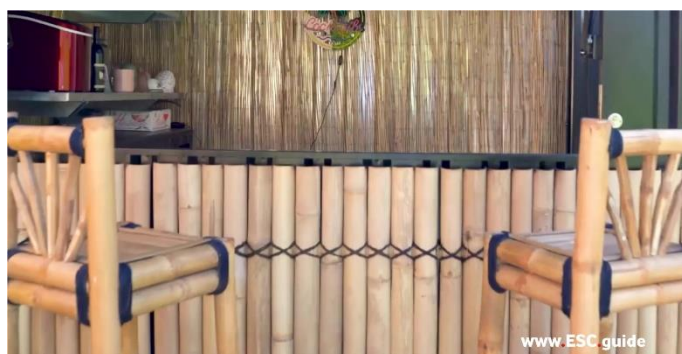
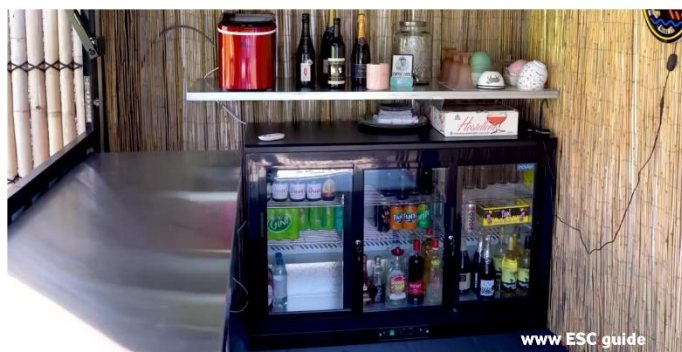
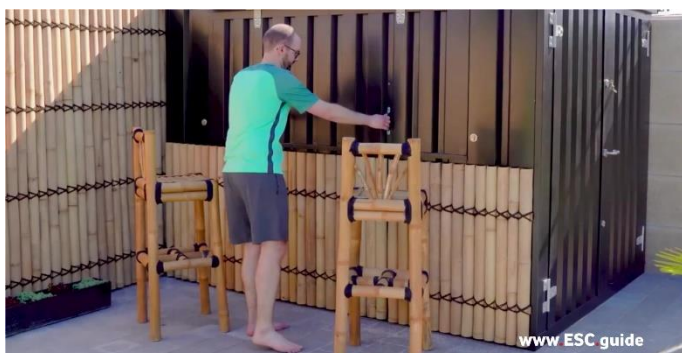
More VIDEOS / PHOTOS: <https://www.esc.guide/post/farmers-market-red-container-pop-up-ral-3018>



www.esc.guide/barcontainer

Garden Bar Container 3x2m XL with a Foldable Canopy

More VIDEOS / PHOTOS: <https://www.esc.guide/post/garden-bar-container-3x2m-xl-with-a-foldable-canopy>



www.esc.guide/barcontainer

Ice Cream Shop Container 3x2 meters RAL 9005

More VIDEOS / PHOTOS: <https://www.esc.guide/post/ice-cream-shop-container-3x2-meters-ral-9005>



Large Bar Container in Green RAL 6005 6x2 meters

More VIDEOS / PHOTOS: <https://www.esc.guide/post/large-bar-container-in-green-ral-6005-6x2-meters>



www.esc.guide/barcontainer

Outdoors Bar in a Container, a great addition to your backyard!

More VIDEOS / PHOTOS: <https://www.esc.guide/post/outdoors-bar-in-a-container-a-great-addition-to-your-backyard>



www.esc.guide/barcontainer

Restaurant in a Container 4x2 meters Anthracite Color RAL 7016

More VIDEOS / PHOTOS: <https://www.esc.guide/post/restaurant-in-a-container-4x2-meters-anthracite-color-ral-7016>



www.esc.guide/barcontainer

Retro Style Backyard Container Bar with Colorful Interior

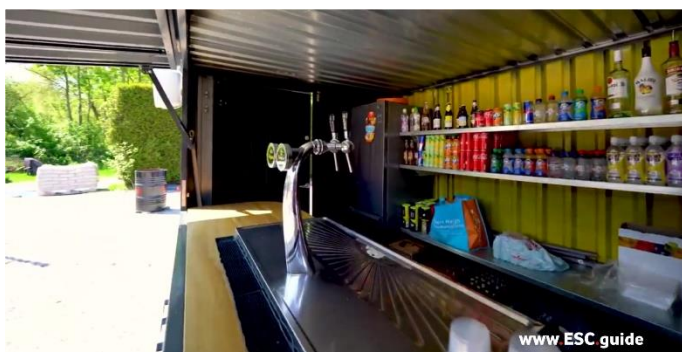
More VIDEOS / PHOTOS: <https://www.esc.guide/post/retro-style-backyard-container-bar-with-colorful-interior>



www.esc.guide/barcontainer

Shipping Container Bar Padel Sports Center 4x2 XL

More VIDEOS / PHOTOS: <https://www.esc.guide/post/shipping-container-bar-padel-sports-center-4x2-xl>



www.esc.guide/barcontainer

Stunning Pop-Up Container Design at a Seaside Beach Club!

More VIDEOS / PHOTOS: <https://www.esc.guide/post/stunning-pop-up-container-design-at-a-seaside-beach-club>



www.esc.guide/barcontainer

The Metal Container in Black 4x2 meters XL

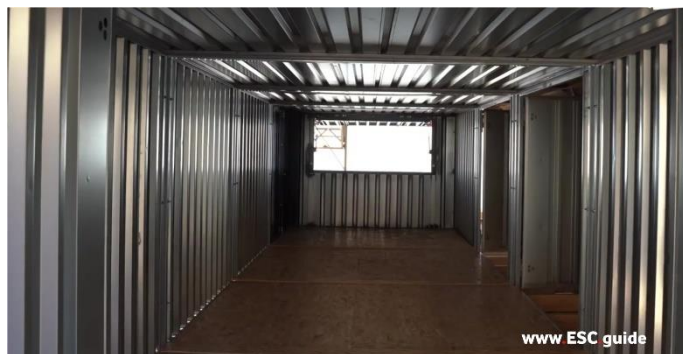
More VIDEOS / PHOTOS: <https://www.esc.guide/post/the-metal-container-in-black-4x2-meters-xl>



www.esc.guide/barcontainer

Beachside Modified Shipping Containers in Black RAL 9005

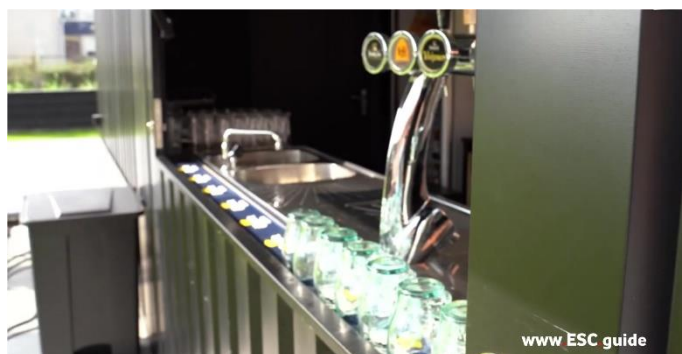
More VIDEOS / PHOTOS: <https://www.esc.guide/post/beachside-modified-shipping-containers-in-black-ral-9005>



www.esc.guide/barcontainer

Demountable Container DOK Bistro Bar and Hotel

More VIDEOS / PHOTOS: <https://www.esc.guide/post/demountable-container-dok-bistro-bar-and-hotel>



www.esc.guide/barcontainer

Surfing Shop Flat Pack Container 4x2m in Color Blue

More VIDEOS / PHOTOS: <https://www.esc.guide/post/surfing-shop-flat-pack-container-4x2m-in-color-blue>



www.esc.guide/barcontainer

Football Club Bar Container 4x2m RAL 8000 - FC Lisse

More VIDEOS / PHOTOS: <https://www.esc.guide/post/football-club-bar-container-4x2m-ral-8000-fc-lisse>



www.esc.guide/barcontainer

Coffee Bar & Bakery Container 8x2 m RAL 3015

More VIDEOS / PHOTOS: <https://www.esc.guide/post/coffee-bar-bakery-container-8x2-m-ral-3015>



www.esc.guide/barcontainer

White Folding Canopy Container Pool Stand 3x2 meters RAL 9016

More VIDEOS / PHOTOS: <https://www.esc.guide/post/white-folding-canopy-container-pool-stand-3x2-meters-ral-9016>

