

Solemaran COCO

Water Sunlounger



Solemarans are products created by a Warsaw design studio. The first of the family – Siesta Solemaran – was initially an interesting experiment for personal use. Soon, however, due to big interest it caused, it had become a product for sale. It is not a **pedalo** – it is a completely new and innovative type of a floating unit – call it a **water sunlounger**, a **private island** or a **water bed**. It is unique for its innovative design and high quality workmanship. Designed for two, Siesta Solemaran was introduced to the market in 2013, while 2017 saw Coco, with room enough for 5 people! All our tailor-made units are produced by the best manufacturers in the Mazurian District and therefore we were granted the honour to use the logo of „Product of **Warmia & Mazury**” by the Marshall of Warmia and Mazury voivodship. We created Siesta and Coco from the very scratch and take care of our products through the whole process which consists of the ‘conceptual design, cooperation with the authors of the final design, through production, promotion, sale and, finally, after sales service.

Working on both our products is very demanding but at the same time it is a lot of fun. Contact with people – our clients, cooperators and friends involved in the process gives us a lot of satisfaction and positive energy as well as motivation for further work. We are proud to say that Solemarans have been awarded several prizes, as THE BEST PRODUCT at the Wind and Water Fair, Warsaw, 2014, a MUST HAVE for the design at Łódź Design Festival, 2015 . Both Solemarans have been shortlisted for the Warsaw Institute of Industrial Design competition Good Design (Dobry Wzór). Cooperation with the best producers and satisfaction of the customers allow us to be present on the Polish market for over five years now. The Solemaran brand is continually expanding, more and more recognized and appreciated as we are constantly trying to develop our products and ourselves. We are open to cooperation and would like to introduce you to the world of pleasure, relaxation, good laugh, sun and fun on water.

More Information:

Web Link Presentation: <https://www.esc.guide/solemaran>

Official Web Site: <http://solemaran.com>



Solemaran Coco

The purpose of the Solemaran Coco is for tourist and recreational purposes in inland and coastal waters where the wind power can not exceed 3 degrees BFT and the wave can not exceed 0.3 m.

Technical Specifications:

Length:	3,5 m
Width:	2,1 m
Weight of empty unit:	160 kg (with all steel is approx. 210 kg)
Maximum load capacity:	450 kg (according to EN ISO 14946: 2001)
Number of persons:	5
Maximum engine power:	6 kW Max.
Hull material:	lps / GRP
Propulsion type:	Mechanical
The mass of the empty unit is given without the mass of the outboard motor.	

Equipment:

The yacht should be equipped with basic life-saving appliances for the crew, health and life-saving measures, firefighting equipment, signalling equipment and navigation equipment.

Individual parts of Solemaran:

- **Hull:** Hull with dimensions of 2.1x3.5 m with cockpit and three openers. The backrest is attached to the hull, the ladder in the bow and the lockers with the flaps closed.
- **Roof:** The roof consists of the following elements:
 - - 2 fastened tensioning belts
 - - folding frame construction with stainless steel tubing
 - - polyester canopies
- **Mattresses:** The set includes the following 3 mattresses:
 - - main mattress: 146x200 cm
 - - 2x pillow 70x40 cm main mattress consists of three connected parts.
 - The backrest is stiffened, has rubber dowels stabilizing the mattress in the lying position, and a metal open frame.
- **Ladder:** Ladder is made of stainless steel, lowered, fixed to hulls and platforms.
- **Backrest:** The backrest consists of a metal rail fixed to the hulls and a round cushion.

Product information:

Declaration of Conformity Declaration of Conformity of Recreational Watercraft in Design, Construction and Noise Emissions in Compliance with the Requirements of Directive 2013/53/EU

- Construction Evaluation Model Used: A
- Type Name: Solemaran
- Model: Coco
- ID number is placed on hulls

Polish Register of Shipping Examination Report:

- MODULE A1
- CW/RCD/2244/2017
- Type of craft: Motorboat
- Type name: Solemaran Coco
- Design category: C



www.ESC.guide



www.ESC.guide



www.ESC.guide



www.ESC.guide



www.ESC.guide



www.ESC.guide



www.ESC.guide



www.ESC.guide



www.ESC.guide

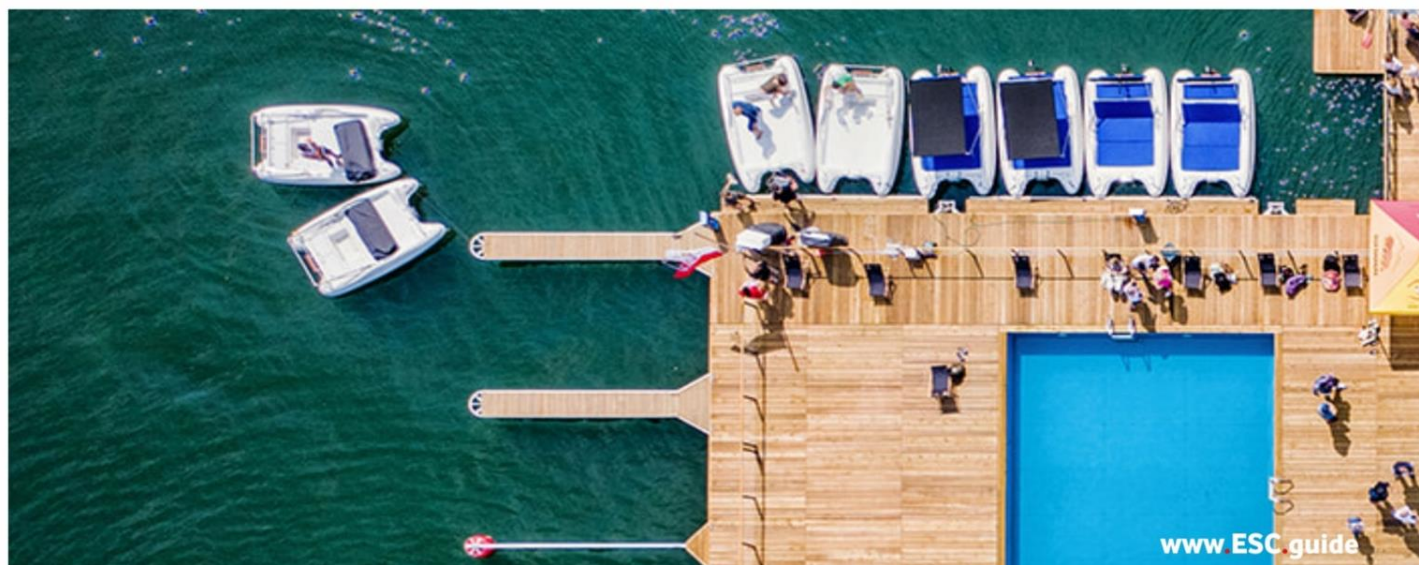


www.ESC.guide

General conditions of use

- The manufacturer guarantees that Solemaran works properly with the precautions and recommendations contained in this Instruction.
- The Instruction of the engine mounted on the unit should be considered as an integral part of the unit and as such also respected. The unit is intended for tourist and recreational purposes, not suitable for sport and performance sailing.
- Do not use Solemaran at winds greater than 3 °on Beaufort scale and waves above 0.3 m. Sailing is permitted only daytime.
- Unit does not have traffic lights. In the event of weather deterioration, immediately move towards the shore and moor.
- Avoid collisions with kayaks, water bikes and other vessels, as well as avoid impacting the unit on the platform.
- The manufacturer is not responsible for damages resulting from mechanical damage.
- It is forbidden to fling the object without an important reason.
- On board, you should move in a soft non-slip shoe.
- During boating the seat lockers must be closed. The boat should be entered using a ladder. In no case a wooden transom should be used to board.
- The drain hole in the cockpit should be open. In case of failure of the hull (including ladders, transom and backrest), bimini, mattress and its components, Solemaran shouldn't be used.
- Solemaran can be launched, taken out of water and transported by trailer.
- Extinguish a fire using extinguisher if possible. The fire extinguisher should be kept in a seat locker. The unit is designed for swimming during the day.
- When using Solemaran after dark, the appropriate navigation lights shining white should be installed (it is recommended to install an independent LED illumination with battery power).





SOLEMARAN COCO 2023 OFFER - NET PRICE: 11 900 €

ELEMENTS	DESCRIPTION
Hull	3,5 x 2,1 m / white / high quality white laminate
Mattress	Double foldable mattress / marine fabrics, colors to choose, raised backrest / stainless steel
Pillows	2x pillow 70x40 cm & backrest pillow / colors to choose
3 lockers	Back locker for batteries (2x) and two side lockers for personal stuff
Engine's holder	Stainless steel, mahogany wood
Bimini	Foldable / marine fabrics, colors to choose, stainless steel
Ladder	Foldable ladder / stainless steel
Drink holders	2 pc / stainless steel
Cockpit	Seat for 2 persons

* All rights reserved. The offer does not include the transport and drive. Product on order. The offer can be changed. This document does not constitute an offer within the meaning of 66 § 1 the Civil Code. The guarantee is valid in Poland.



SOLEMARAN COCO 2023 OFFER - ALL INCLUSIVE - NET PRICE: 13 500 €

ELEMENTS	DESCRIPTION
Hull	3,5 x 2,1 m / white / high quality white laminate
Mattress	Double foldable mattress / marine fabrics, colors to choose, raised backrest / stainless steel
Pillows	2x pillow 70x40 cm & backrest pillow / colors to choose
3 lockers	Back locker for batteries (2x) and two side lockers for personal stuff
Engine's holder	Stainless steel, mahogany wood
Bimini	Foldable / marine fabrics, colors to choose, stainless steel
Ladder	Foldable ladder / stainless steel
Drink holders	2 pc / stainless steel
Cockpit	Seat for 2 persons
Drive Set	Electric engine 65 lbs, lithium battery 105 Ah, charger

* All rights reserved. The offer does not include the transport and drive. Product on order. The offer can be changed. This document does not constitute an offer within the meaning of 66 § 1 the Civil Code. The guarantee is valid in Poland.








SOLEMARAN'S Spare Parts

Spare parts	Net price
Main mattress	419 €
Back pillow 70x40	79 €
Roll back pillow	89 €
Bimini textile	219 €
Laminate back locker cover	265 €
Laminate left/right locker cover	130 €

All rights reserved. The offer does not include the transport. Product on order. The offer may change. This document does not constitute an offer within the meaning of 66 § 1 the Civil Code. The guarantee is valid in Poland.



SOLEMARAN Accessories

	<p>Folding table/tray 50 cm</p> <p>Materials: stained, impregnated oak, waterproof plywood</p> <p>A custom-made product. Each piece may differ in board shade from the one pictured. Complete with cover.</p>	<p>EUR 389</p>
	<p>Printed in one colour</p> <p>Colour printing</p>	<p>EUR 99</p> <p>EUR 119</p>
	<p>Pillow 50x50 cm</p> <p>Materials: water- and UV-resistant vinyl fabric</p> <p>Bespoke product. When ordering 2 pieces, cover included. Colours to choose from the sampler.</p> <p>Headrest for mattress available soon.</p>	<p>EUR 49</p>
	<p>Folding wooden paddles 130 cm</p> <p>Materials: pine, plastic</p> <p>Rope bouncer</p> <p>Width 12 cm Height: 45 cm Rope with eyelet: 1,5 m</p>	<p>EUR 59</p> <p>EUR 39</p>
	<p>Towel for solemaran, deckchair, sauna 100x220 cm</p> <p>Material: cotton 100%</p> <p>Colours: white, black, yellow, graphite</p> <p>Head and feet hygienically on a towel. Two hangers facilitate convenient hanging, high-quality yarn, soft terry fabric, absorbent and quick-drying, certified in accordance with Ökotex-Standard 100.</p>	<p>EUR 59</p>



Night cover waterproof / set

Material: poliester
Colour: black

The set consists of:
- the main cover (covering unfolded
mattress and back cushions)
- cushion/shaft cover

EUR 149



Port tarpaulin

Material: poliester
Colour: grey

Whole Solemaran cover to protect
unfolded mattresses.
Fastened with press studs.

EUR 679



Winter cover

Material: poliester
Colour: grey

Cover for the entire Solemaran to protect
it during a longer stopover.
Removable by means of a carry strap.
With air vent and zip opening for easy access
to the inside without having to unbuckle
the belt.

EUR 809



SUP Traveler 11'6" Eco board

Parameters:

Weight: 10.5 kg

Recommended / maximum load: 180 kg / 320 kg

Capacity: 320 litres

Dimensions when inflated: 350x81.5x15 cm

Recommended / maximum pressure:

15psi/25psi

Double layer: Yes (Two layers of PVC material)

Technology: ULT (Uone Light Technology)

Fibre density: 28800 fibres/m²

Board type: Touring

Included:

- stylish backpack
- stabilising fin
- three-piece paddle
- double action pump
- lanyard
- repair kit
- B2C warranty 5 years

EUR 759



Light steel trailer / black sandblasted

Width: 2,4 m

Length: 4,5 m

Equipment:

Rollers for easy launching

Winch

LED lights

homologation

EUR 2 109

EUR 2 529

Moreover: GPS locator
EUR 129

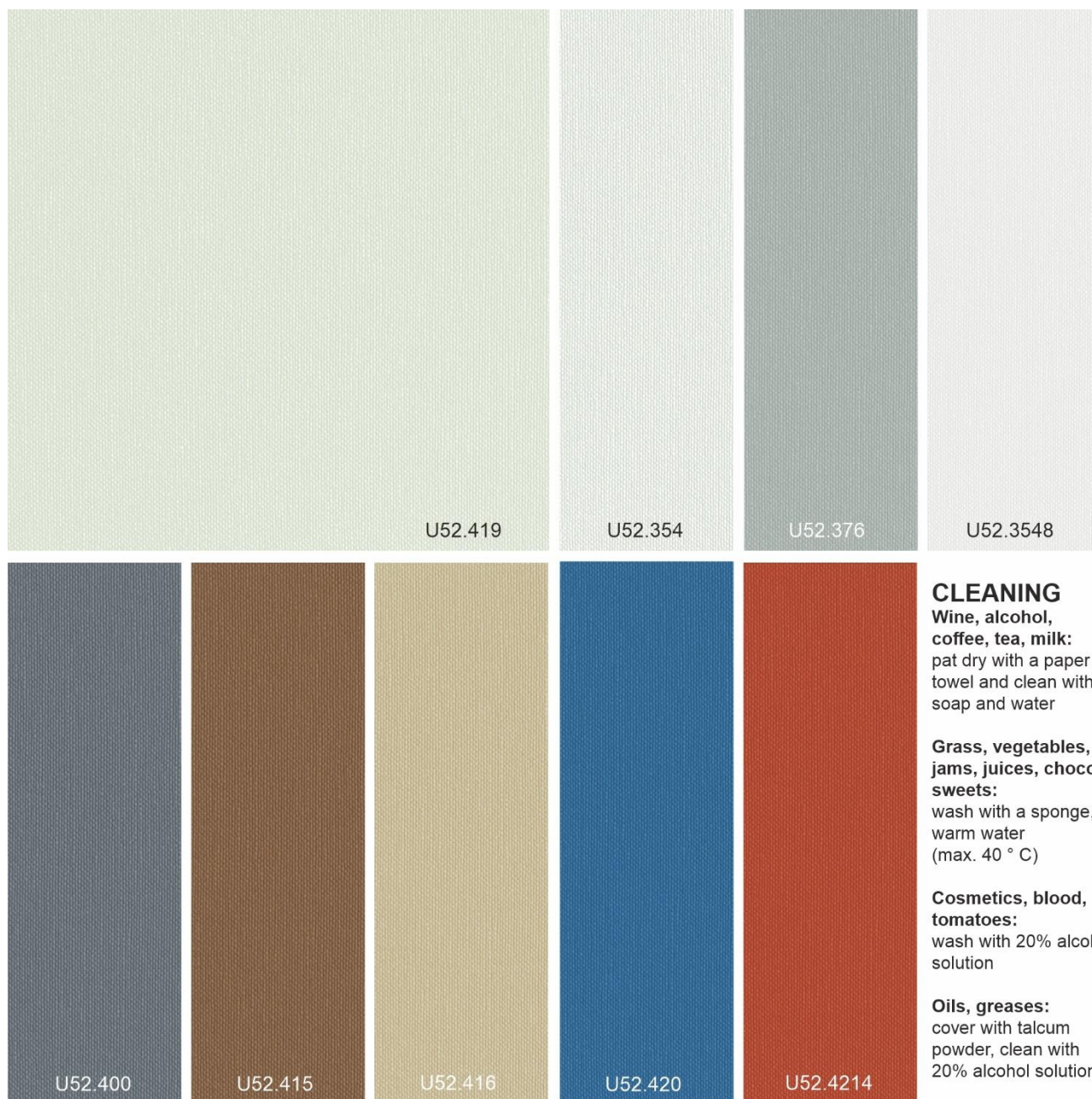
Mooring line
with loop, 6 m
EUR 59

Lithium battery
105 Ah
EUR 569



Vinyl Fabrics / Basic Mattress

Very good quality marine vinyl fabric, elegant, pleasant to the touch. Two-layer material (vinyl-coated polyester carrier), resistant to abrasion and light (7 on a scale of 1-8), antibacterial. Polish producer.



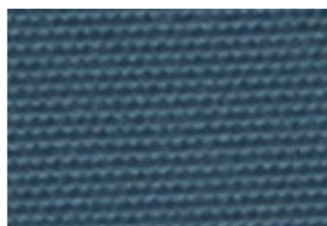
* The colors on the screen may slightly differ from the actual colors.



** The colors on the screen may slightly differ from the actual colors.*

			
B: BLANCO 2439	B: VAINILLA 8666	B: SEDA 2267	B: INTEGRAL 2428
			
B: AVENA 2429	B: MARFIL 2163	B: BEIGE 2055	B: VISON 2266
			
B: TEJA 2442	B: BRASSERIE 2473	B: GRANATE 2115	B: RIOJA 2634
			
B: ROJO 2345	B: NARANJA 2138	B: AMARILLO 8667	B: CAFE 2434
			
B: MARRON 2625	B: TWEED AVENA 2717	B: LILA 2058	B: ACQUAMARINA 2433

** The colors on the screen may slightly differ from the actual colors.*



B: JADE 2715



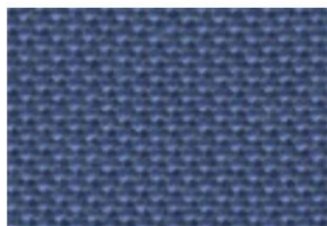
B: VERDE 2748



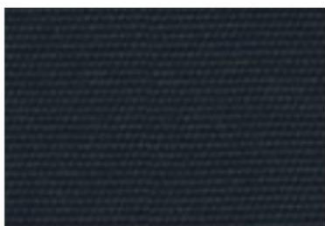
B: BOTELLA 2531



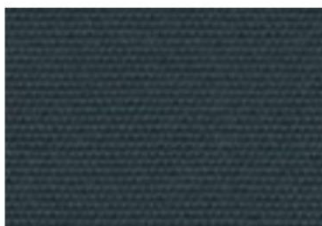
B: RACING 2098



B: FREGATA 2072



B: ADMIRAL 2450



B: ARMADA 2059



B: COMMODORE 3553



B: MARINO 2437



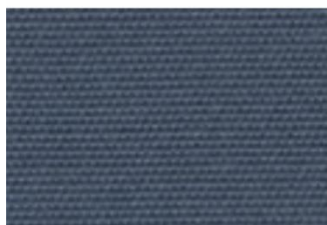
B: AZUL 2431



B: AZUL REAL 2435



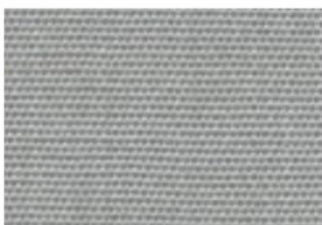
B: INDIGO 2745



B: BRISA 2712



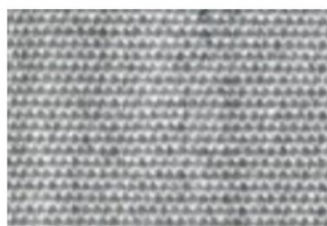
B: SILVER 2540



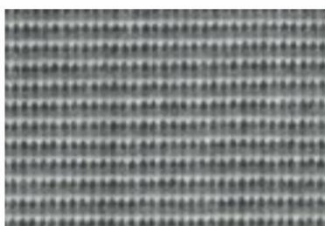
B: PERLA 2703



B: GRIS 2895



B: PIEDRA 3598



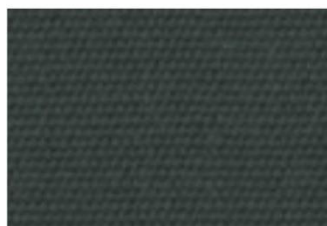
B: TWEED GRIS 2716



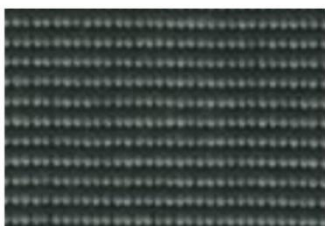
B: MINERAL 2749



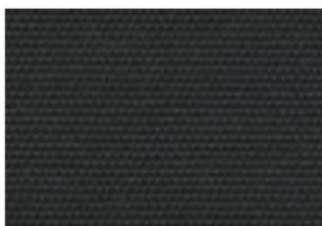
B: GRAFITO 2057



B: ANTRACITA 8487



B: TWEED NEGRO 2227



B: NEGRO 2880

CLEANING

Clean gently with a brush vacuum cleaner, cloth. Use water (max. 30 °) and soap, avoid aggressive agents. Leave to dry. Not withhold it.

* The colors on the screen may slightly differ from the actual colors.