

www.esc.guide/ceclo

CECLO FUN X2 & H2

Electric Water Bike



More Information:

Web Link Presentation: <https://www.esc.guide/ceclo>

Official Web Site: <https://www.ceclo-experience.fr>

www.esc.guide/ceelo



www.ESC.guide



www.ESC.guide



www.ESC.guide

1. Safety

Be aware of the climatic conditions you plan to sail under: precipitation, wind speed, swell, and so on. The Ceclo has been designed to navigate under a mild climate, meaning that wind gusts should not exceed 5 knots, and swell no higher than 50 cm. We therefore encourage its use in still water conditions. Never navigate with your Ceclo under extreme weather conditions (thunderstorms, violent winds...).

1.1. Wear a lifejacket

Safety is always a priority. Therefore we encourage you to wear a lifejacket.

1.2. Beware of hypothermia

Loss of body heat from immersion in cold water can be fatal. In waters of 2°C (37°F), survival cannot last more than 15 minutes. We suggest you to dress taking into account weather conditions.

1.3. Cold shock response

During hot weather, after exercise or a meal, your body temperature increases. In order to avoid the thermal choc between your body and the water, make sure you refresh yourself progressively before leaving your Ceclo for a swim.

1.4. Do not use the Ceclo alone

We recommend that you do not board the Ceclo alone. If that is the case, make sure you warn your relatives of your trip by informing them of your time of departure and return, as well as the route you will be taking. This way, they could call for help in case of emergency. Never let minors navigate your Ceclo alone. They must be accompanied or placed under the supervision of an adult.

1.5. Load capacity

The Ceclo is designed to carry a 225 kg load, representing 2 people. Before your trip, double-check the maximum load you plan to set sail with. We also recommend that you keep the weight of the load balanced, thus ensuring the best possible stability as well as the Ceclo's optimum performance. Each Ceclo is equipped with a builder's plate containing its serial number (located on the front of the motor support) and specifying its load capacity (at the location of the battery behind the seats).

1.6. Behavior onboard

We strongly advise against jumping off and/or heckling on the Ceclo, as this could lead to injury or falls. You are advised to sit down in your Ceclo for the whole duration of navigation.

1.7. Use of substances

Never consume alcohol, drugs or any other substance that can affect your coordination, cloud your judgment or hinder your capacity to navigate your Ceclo.

www.esc.guide/ceelo



2. General conditions of use

2.1. Road transport conditions

The transport of the Ceclo is mainly carried out with the deflated floats and placed in the rear or in the trunk of your car. It is prohibited to climb on the Ceclo if it is transported on a trailer, even when stationary.

Make sure to lift the Yamaha® outboard motor before any trip on the Ceclo (cf. § 4.6).

It is prohibited to transport your Ceclo with accessories on it. Make sure to remove the awning (roof fabric) and its arches, cover, grappling iron, battery or any accessory external to the Ceclo.

Any breach of these conditions shall result in immediate loss of warranty.

2.2. Navigation conditions

The Ceclo is a category D vehicle. As such, navigation at sea can only be performed within the regulated distance of 300 meters. For navigation on lakes or rivers, prior authorization must be granted by the municipal authority.

It is paramount to perform a comprehensive visual check of the Ceclo before any trip. If any doubts arise with respect to the general condition of the product, do not use it and contact our helpline by email : usine@ceclo.fr

Do not use the Ceclo if depth is inferior to 30 centimeters.

The Ceclo cannot be used under upset weather conditions: wind speeds higher than 5 knots, swell under 50 cm, thunder, rain or hail.

Aboard the Ceclo, children must carry a lifejacket, know how to swim and be placed under an adult's close supervision. The maximum load capacity of a Ceclo is of 225 kg, meaning 2 people.

It is forbidden to climb on the Yamaha® outboard motor and to remove the battery when using the Ceclo.

For safety reasons, it is strictly prohibited to swim under the Ceclo, to hang onto or hang from the mechanical elements of the Ceclo (tiller, awning, ...), to climb on the floats, stand on the pedals or indulge in any other potentially dangerous action.

We also remind you that it is strictly forbidden to tow, pull or push the Ceclo using another boat or any watercraft that would bring it to a speed exceeding 5 knots.

Any breach of these conditions shall result in immediate loss of warranty.

2.3. Handling requirements

The Ceclo should only dock on fine sand or on a platform provided for this purpose.

Warning! Berthing your Ceclo on a pebble or rocky beach constitutes a risk of piercing the floats.

Make sure the nozzle is lifted during this operation.

www.esc.guide/ceclo

When you are not using your Ceclo, we highly recommend that you attach it to an anchorage, a pontoon or a buoy provided for this purpose.

Do not recharge the battery during a thunderstorm.

It is forbidden to mechanically or aesthetically modify the Ceclo without the prior agreement of the manufacturer.

Any breach of these conditions shall result in immediate loss of warranty.



www.ESC.guide

3. Device description

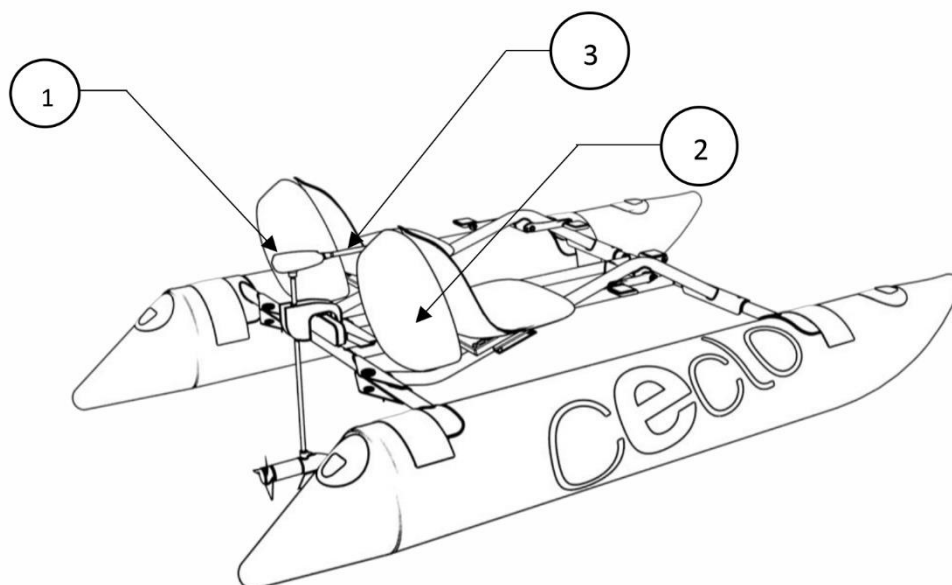


Figure 1: General Ceclo Fun X2 pattern.

NUMBER	DESIGNATION
1	YAMAHA® OUTBOARD MOTOR
2	BATTERY LOCATION
3	TILLER



www ESC guide

www.esc.guide/ceelo



[www ESC guide](http://www.ESC.guide)



[www ESC guide](http://www.ESC.guide)

4. Start-up

4.1. Battery autonomy and longevity

The battery's longevity can last up to 9 hours depending on your use of the Ceclo. Its full charging time is of 10 h. Its total lifespan corresponds to 2 000 cycles. However, after two years of functioning, or after 2 000 cycles, it loses 20% of its capacities (about 5-7% per year).

4.2. Install the railing and the rudder control lever

Upon receipt of your Ceclo, you will need to inflate the floats using the pump provided. First do this so that they take their shape but allow the positioning of the crossbars afterwards. You can then position the latter by sliding the "metal tabs" into the pockets of the floats provided for this purpose (figure 2).

Note: To inflate the floats, check that the yellow cap is turned $\frac{1}{4}$ to the right.

Over the crossbars, position the swan necks (seat support) by aligning them with the holes for the star screws, and screw them (figure 3).

You can now inflate the floats to 3.5 bars maximum.

Note: Consider that in the morning if you inflate the floats to 3.5 bars, the air will expand over the day with the heat and reach the maximum inflation of 4 bars. In summer it is therefore preferable to inflate them to only 3.5 bars.

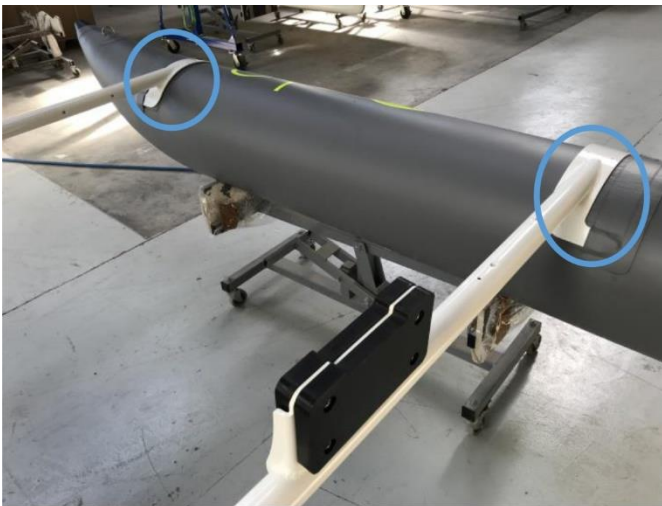


Figure 2: Positioning of the crossbars.



Figure 3: Positioning of the swan necks.

Now place the seats and secure them with the supplied nuts screws (figure 4).

www.esc.guide/ceclo



Figure 4: Positioning of the seat support.

4.3. Installing and removing the battery

The battery location is behind the seats (figure 5).



Figure 5: Battery box placement.

Carefully place the waterproof bag of the battery in its location, then connect it to the Ceclo motor (figure 6). Before removing it, first check that the motor and the bag are completely disconnected.

www.esc.guide/ceclo



Figure 6: Installing and removing the waterproof bag of the battery.

4.4. Charging the battery

The provided charger allows you to charge the Ceclo battery by plugging it into the mains (figure 7). It cannot serve any other purpose



Figure 7: General battery charger diagram.

Before charging your battery, you must remove it from its location. Charging must be performed under your supervision, in a cool and dry, well-ventilated area. All you have to do is connect the charger into the battery / motor plug.

When charging, 3 LEDs light up on the charger (figure 8).

SIGNING (LED)	SIGNIFICATION
Fixed red Led	First phase of normal charge
Fixed yellow Led	Second phase of normal charge
Fixed green Led	End of charging or maintenance phase

ANOMALIES	
Flashing yellow Led	Battery not connected or Errone type battery OR short-circuit at output
Flashing red Led	Safety timer exceeded OR internal short-circuit



Figure 8: Indications of visual signals.

Note 1: The battery charge level can be checked at any time using the Coulomb CC75 counter on the top of the motor.

Note 2: The battery relies on Lithium-ion technology, implying it is free of any memory effect. You can therefore charge it no matter the remaining power level, and without impairing its capacities.

Caution:

- To maintain battery longevity, unplug the charger once charging is completed.
- Not using the battery for an extended period of time may cause permanent damage. Remember to charge it up every 3 months.
- If you do not use the Ceclo for an extended period of time, it is advised to remove the battery and maintain its charge level between 60 and 80%.
- At the end of the day, remember to unplug the battery from the Ceclo: slow discharge can occur when it is plugged in with the Ceclo is turned off.
- The battery charger is not water and/or impact-resistant.
- Maintain the battery and its charger away from any source of heat.
- Once the battery is fully empty, it must be charged up quickly. Cells that remain empty for too long can be permanently damaged.
- Keep out of reach of children.
- When transporting your Ceclo, it is prohibited to leave the battery in its box.

The battery can be used at a temperature between 0°C and 55°C (131°F). It can be stored between 0°C and 60°C (140°F). For optimal longevity, we recommend a temperature of 25°C (77°F).

4.5. Coulomb counter attached to the motor

The battery charge level can be checked at any time using the Coulomb CC75 meter attached to the top of the motor. It also calculates in real time the time remaining before the battery is completely empty (Figure 9).



Figure 9: Description of the Coulomb counter interface.

Before each departure, as soon as the battery is connected to the engine, it is necessary to reset the battery gauge by pressing "▲" for 3 sec.

Our counter is preprogrammed at the factory, but if you need to reprogram the battery capacity, here are the steps:

- Hold "↵" 3 seconds in the main interface to access the parameters.
- Press "▲" or "▼" to select the "CAP" line.
- Press "↵".
- Enter the battery capacity, here 40-amp hours. Each digit can be modified by "▲" or "▼", then use " " to go to the next digit.
- When the capacity is entered, keep "↵" for 2 seconds to save the parameter.
- Press "▲" and "▼" simultaneously to exit the parameters menu.

The meter backlighting turns on when charging the battery as soon as the current is greater than the operating current of the backlighting, and it turns off automatically when the battery is not in use.

In the event of strong electromagnetic noises (example: motor or electric dimmer), the measurement accuracy may be affected.

If you experience instability in the information displayed, try to move the shielded cable as far as possible from sources of radiation.

If the battery is not in use, the Coulomb counter may display a very low current (a few mA). This current reflects the

consumption specific to the Coulomb counter. But since this measurement is close to zero, the measurement may not be very precise. The actual consumption of the Coulomb counter is 6mA in ON backlighting and 0.7 mA in OFF backlighting.

To keep the LCD screen in good working condition: Do not expose the screen to direct sunlight for too long. Do not use it at low temperature (< -20 ° C) or high temperature (> 60 ° C).

The meter is for the exclusive use of the supplied battery. It must be reprogrammed if it is used on a different battery than the original.

4.6. Turning the Yamaha® outboard motor on/off

After installing the waterproof bag of the battery in its location, you can place the Yamaha® outboard motor on the motor support at the back of the Ceclo and fix it with the clamp screws. To connect the motor, all you have to do is:

- Connect the motor/battery plug to the waterproof bag of the battery,
- Connect the 2 pedaling plug respectively on each side of the motor (spring wire) (figure 10).

You can take a seat on the Ceclo. To turn it off, simply undo the 3 connections connected to the motor.

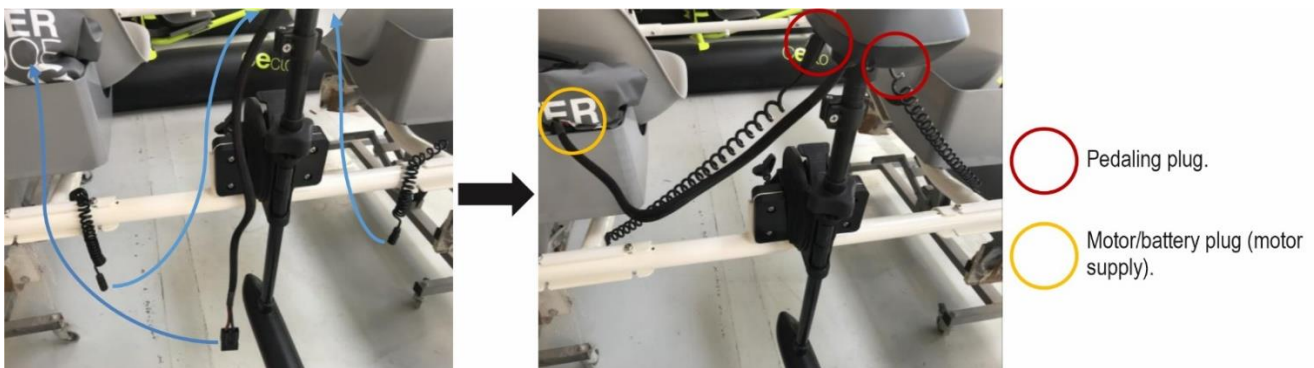


Figure 10: Motor connections.



www.esc.guide/ceelo



5. Navigation

5.1. The Yamaha® outboard motor

The Yamaha® outboard motor lets you reach a steady cruise speed of 2 knots (4 kph; 3 mph). The maximum speed achieved will be approximately 4 knots (6-7 km/h; 4-5 mph). When the motor is turned on, Ceclo startup is different from starting another pedal-powered craft. It is therefore advised to give it a try in a quiet and uncrowded place to get yourself familiar with the handling of your Ceclo.

Caution:

- Given the inertia obtained while pedaling, it is important to anticipate your route. Indeed, when you stop pedaling, the Ceclo keeps on moving for some meters.
- When you start, do not forget that the motor will strengthen your own effort. Moderate your enthusiasm when starting-off!

5.2. Launching the Ceclo

To put your catamaran in the water, we suggest you to use a ramp provided for this purpose or a gentle slope at water's edge (figure 11). In order to facilitate this, a tailor-made Ceclo trailer can be supplied, as well as a boat dolly. For any orders or information requests, we invite you to contact us at this email address: contact@ceclo.fr.

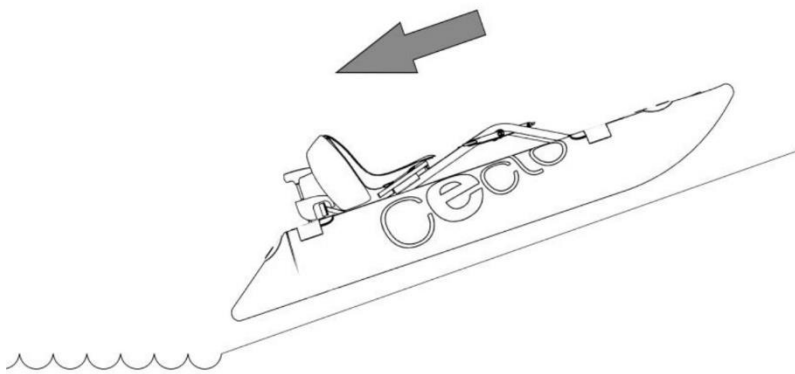


Figure 11: Launching the Ceclo.

5.3. Navigating with your Ceclo

Thanks to your catamaran, you will be able to safely navigate with great serenity, so long as the safety recommendations mentioned in this guide are complied with.

Steering is done using the tiller handle of the Yamaha® motor. By activating this control to the left the Ceclo will move to the right, and vice versa for the control to the right.

The 15 cm telescopic handle provides an additional extension for convenient operation of the Ceclo. (figure 12).

The handle has also 7 available positions: 45° down, horizontal, 15°, 30° and 45° tilted up. It locks in the horizontal position but can be tilted down by pushing the release button located on the left underside of the handle pivot.

The speed and start / stop controls do not work with the tiller, this is done by pedaling.

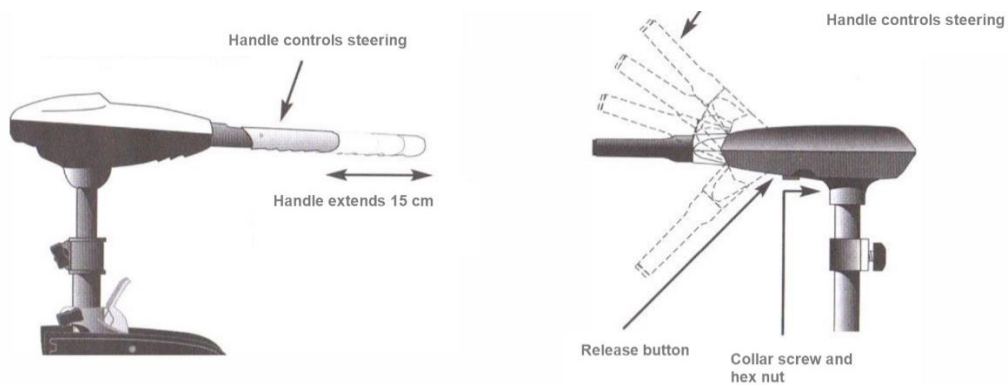


Figure 12: Tiller handle of the engine, telescopic and tilting.

Caution: Never operate your motor when it is out of the water.

Note: Operation of the Ceclo is only carried out with the engine in the low position. It can be reassembled when setting up, docking or for storing your Ceclo using the quick-release tilt lever (Figure 13).

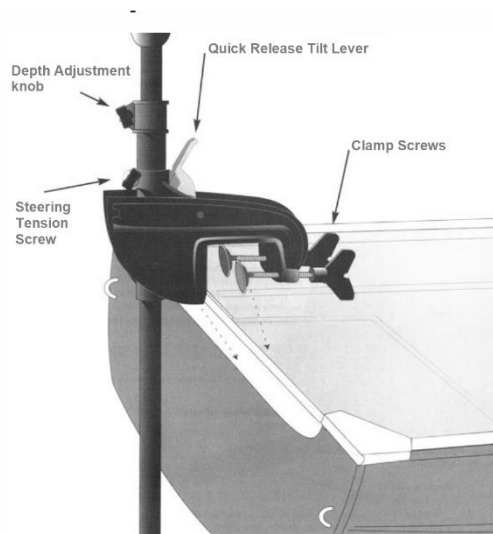


Figure 13: Motor position settings.



6. After use

6.1. Cleaning and visual check

Once your tour on the Ceclo has come to an end, do not forget to disconnect the cables connected to the motor to turn it off. You are advised to remove the waterproof bag of the battery from its location after every use.

When the day ends, take your Ceclo back to land, rinse it with clean water, dry it, and perhaps cover it with a protective cover. To remove stubborn marks, it is possible for you to clean the Ceclo's hull with soapy water. The latter will keep it safe from potential damage caused by dirt and from corrosion due to marine environments. Then, proceed to a visual check of the pivoting mechanical parts (figure 14) such as the pedal axle to make sure they contain no extraneous objects (sand, stones...).

During overwintering periods – when your Ceclo is out of the water – make sure to open the water drain plugs to ensure the hull's ventilation, hence avoiding potential mildew.



Figure 14: Verification of pivoting parts.

www.esc.guide/ceelo



7. Preventive maintenance

When buying your Cecllo, a preventive maintenance kit is proposed as an option. It will allow you to take care of your Cecllo by yourself, when deemed necessary.

This kit contains:

- 1 propeller
- 1 O-ring + bronze bearing kit
- 1 carbon kit
- 1 tube of marine grease for propeller shaft, crankset
- 2 cadence sensors
- 1 crank puller
- 1 replacement male female connector M12
- 1 Anderson connector
- 3M polishing + anti mold cork
- 2 IGUS ball joints if controlled by push pull

7.1. Propeller replacement

It is possible to replace the Yamaha® outboard motor propeller in your Cecllo.

Caution: Disconnect the motor from the battery before handling the propeller or performing maintenance. Replacement steps:

- Hold the anti-algae propeller firmly and loosen the propeller nut using pliers.
- Remove the propeller nut and the lock washer.
- If the propeller transmission pin is sheared or broken, hold the motor shaft in place with the flat of a screwdriver as you slide it into the slot at the end of the shaft.
- Place the old propeller in a horizontal position (figure 15) and take the propeller out of its axis. If the drive pin comes out of its housing, replace it.
- Align the new propeller with the pin on the drive shaft.
- Install the washer and the propeller nut.
- Tighten the propeller nut ¼ turn after adjusting to the stop.
- Please note that excessive tightening torque can damage the propeller

www.esc.guide/ceclo

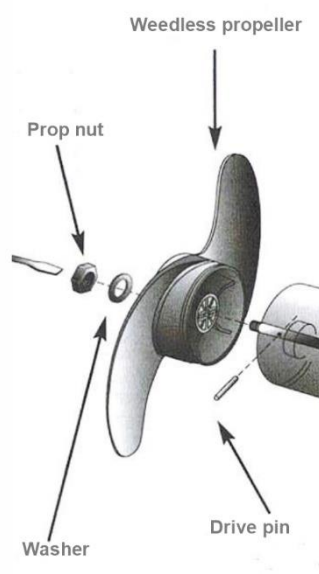


Figure 15: Propeller replacement.

Note: The anti-algae propeller is designed to work with absolutely no adhesion with algae, thus ensuring very high performance. To maintain this high performance, the leading edge of the propeller blades must remain smooth. If the edge is rough or has wear marks, polish it with fine-grained emery paper.





www.ESC.guide

8. Maintenance table

Part	Monthly	Yearly	After 750 hours or every 2 years
TRANSMISSION			
Oil seals	Visual check (no leaks)		Replacement of parts
O-rings			
Coal electric motor			
CONNECTORS AND CHARGER			
Charger	Visual check	Visual check	Visual check
Motor / battery plug			
Pedaling plug			
LINKAGE			
Depth adjustment knob	Visual check (wear check)		Replacement of parts
Steering tension Screw			
Clamp screws			
Tilt lever			
PROTECTION OF BOWS			
Left floating dock: front/center/rear	Visual check		
Right floating dock: front/center/rear			
SMALL PARTS			
Pedals (pair)	Visual check		Replacement of parts

9. Storing

When storing your Ceclo, remove its battery and safely place it away from heat or humidity (see paragraph 4 for indications concerning the battery).

Before storing your Ceclo, perform a visual check and clean it as described in paragraph 6.1. We highly advise you to cover your boat.

Once the navigation season has ended, we suggest you to perform a complete check and clean-out of your Ceclo, to store in out of the water and to cover it with a protective cover.

10. Assistance

10.1. Issues when starting-up your Ceelo

If the electric assistance does not activate:

- Check that the battery is in its location.
- Check the battery's power level.
- Check for any damage or signs of impact
- Check for any humidity or extraneous objects in the plugs and connectors. If there are any, let them dry out in ambient air, then remove the dirt.

10.2. Electric assistance motor group

In case of failure, please contact REV inside's after-sales service at this email address: contact@ceelo.fr.

If the problem persists or if you have any other potential issue, we invite you to contact your nearest distributor or REV inside.

By post:

REV inside
Pôle mécanique
Vallon de Fontanès
30520 Saint-Martin-de-Valgalgues
France

By email:

contact@ceelo.fr

11.Small parts

The Ceelo is a customizable product that contains many small parts.

We can send you our catalogue or provide you with extra information. Do not hesitate to contact our sales team.

12.Warranty

Each Ceelo contains a serial number that can be found underneath the deck, at the front.

The boat is guaranteed 12 months when intended for rental purposes and 24 months when used privately.

The battery benefits from the same level of guarantee with 24 months.

The handle, pedals, Fatboy®, net and halyard as well as cork are considered as wearing parts and are therefore not guaranteed

13. Pricelist

Model	Retail price without tax
Ceclo Fun X2	5 900 €
Ceclo Fun X4 ((Including 4 seats + swimming beach & ladder)	7 900 €
Ceclo Fun H2	4 900 €
Ceclo Fun H4 (Including 4 seats + swimming ladder)/ Slide in option (150 €)	6 900 €

Accessories	Price without tax
Battery pack & central storage (+25% of range) for FUN X2 only	1 000 €

Delay Time	6 to 8 weeks for Original, Boat Cruise or Leisure
Payment Terms	50 % at the order, balance payment 1 week before picking
HS Code	8903 99 91 00
CE beach craft, Handling made In France, 2 years in Warranty parts	

www.esc.guide/ceelo

